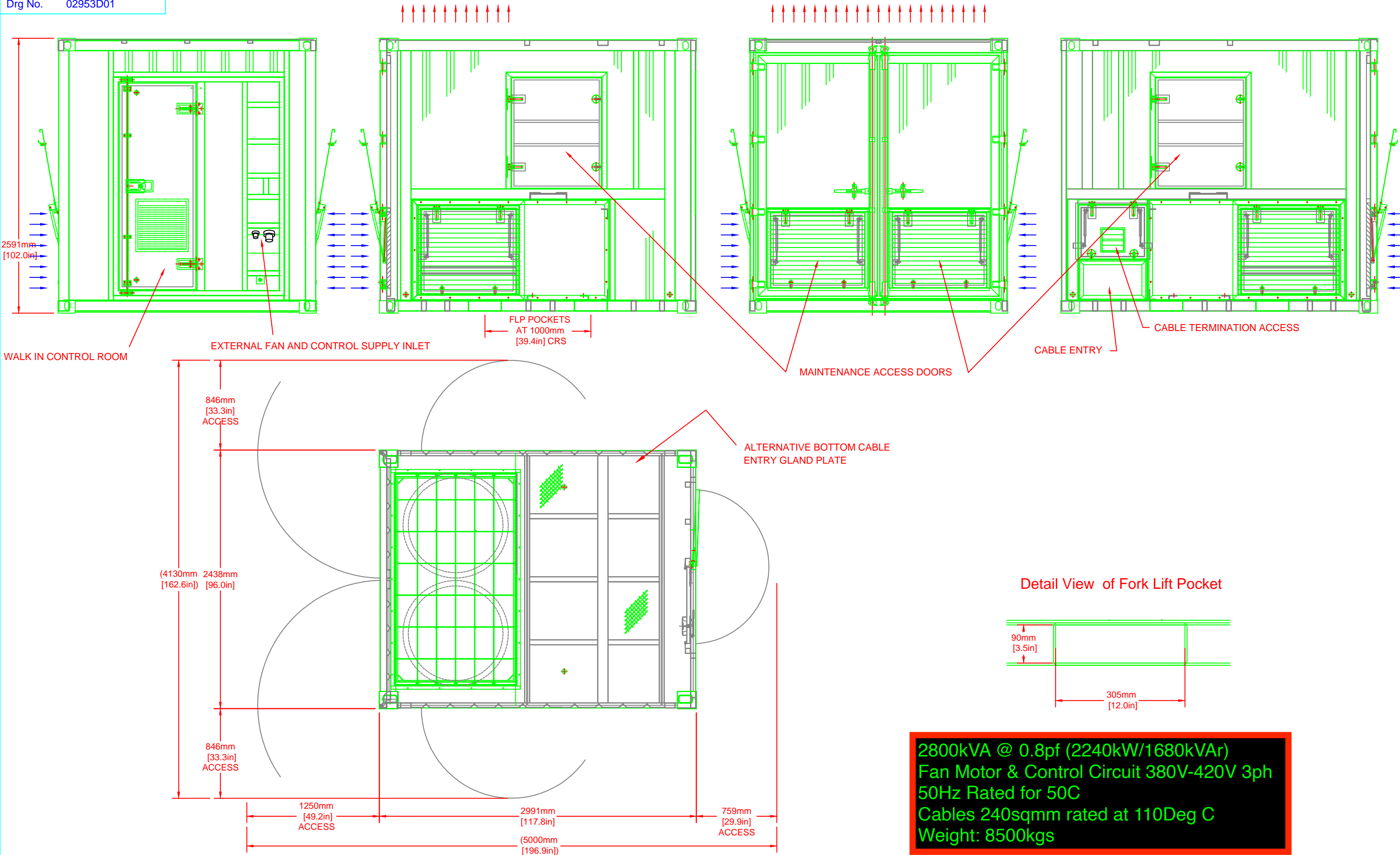


A
B
C
D
E
F
G
H



→ AMBIENT AIR INLET
→ HOT AIR DISCHARGE

WEIGHT APPROX 3.3MVA - 8500 kg (18750lbs)
2.5MVA - 8000kg (17650lbs)
1.7MVA - 6500kg (14350lbs)

WEIGHT FORMAT AMENDED
IMPERIAL MEASUREMENTS FOR DIMENSIONS AND
WEIGHT ADDED
SUPPLY INLET DETAIL ADDED, WEIGHT AMENDED
Revision

MJM 05/10/2011
MJM 10/10/2011
MJM 21/09/2011
Sig Date

D
C
B
Ref

© N.J. Froment & Co. Ltd. This document may not be copied
or disclosed in whole or part without prior written authority.

Drn. MJM Date 29/06/07
Ckd. Date
Appd. Date
Dims. mm Scale NTS
1st angle Projection
Tols.
Material

froment
power test solutions

MC1C LOADBANK
GENERAL ARRANGMENT

N J Froment & Co Ltd -
Easton-on-the-Hill - STAMFORD -
PE9 3NP - United Kingdom
Tel: +44 (0) 1780 480033 - Fax: +44
(0) 1780 480044 -
www.froment.co.uk

CAD Code MC1C-3300
Part No.
Drg No. 02953D01
Sheet 1 of 1